

AUSTAL OFFSHORE EXPRESS 57



DESIGN

Incat Crowther

PRINCIPAL DIMENSIONS

Length overall	57.6 metres
Length (waterline)	53.8 metres
Beam (moulded) Exclude Sponsons	12.5 metres
Depth (moulded)	4.7 metres
Hull draft (max.)	2.3 metres

PAYLOAD AND CAPACITIES

Maximum deadweight	160 tonnes
Crew (subject to flag)	20
Passengers	90
Fuel	100,000 litres
Cargo Deck	100 tonnes (5t/sqm)

PROPULSION

Main engines	4 x MTU 16V4000M73L
Gearboxes	4 x ZF 9050NR2H
Waterjets	4 x Hamilton HT-810
Bow Thrusters	2 x Retractable azimuth (2 x 150 kW)

PERFORMANCE

Speed (90% MCR)	40.0 knots
Maximum Range	600 Nm at 40.0 knots
Dynamic Positioning	DP-2

CLASSIFICATION

DNV ✱1AI HSLC Crew R1, DYPNOS AUTR, Fire Fighter capability

Cyprus Flag



YARD NO: 409

DESTINATION: UNDISCLOSED

DELIVERY: 2016

CLIENT: SWIRE PACIFIC OFFSHORE (SPO)

AUSTAL OFFSHORE EXPRESS 57

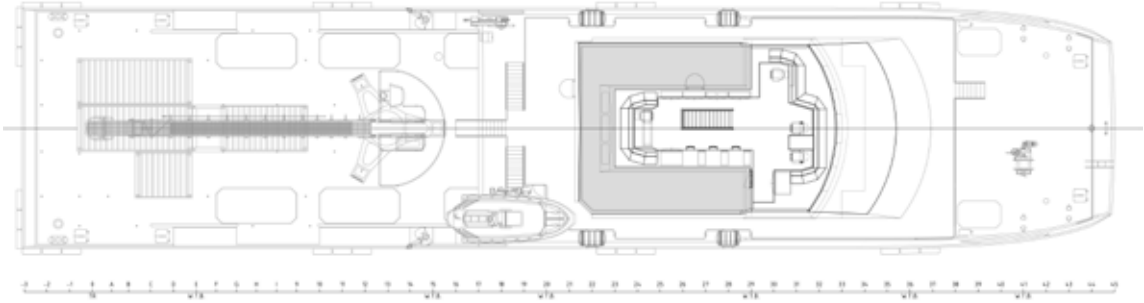
Vessel type: 57m High Speed Crew Transfer



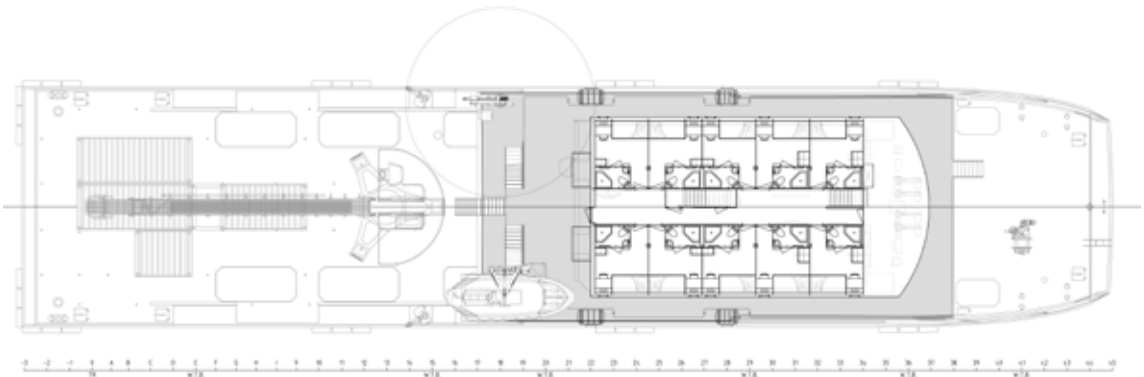
PROFILE



UPPER DECK



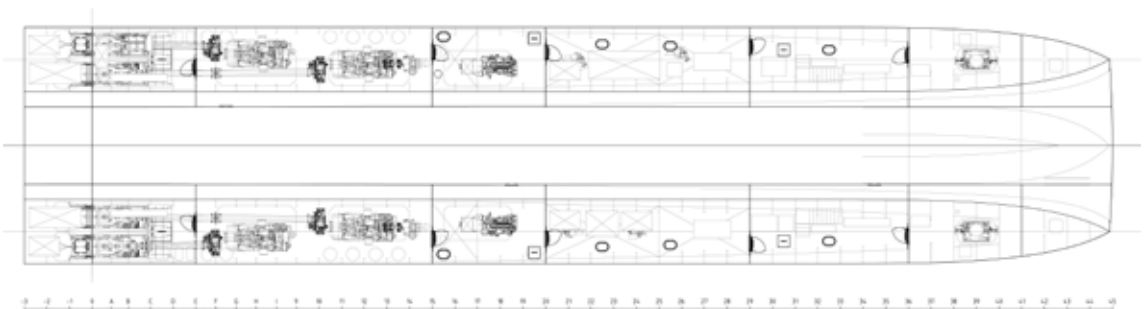
MID DECK



MAIN DECK



HULLS



YARD NO: 409

DESTINATION: UNDISCLOSED

DELIVERY: 2016

CLIENT: SWIRE PACIFIC OFFSHORE (SPO)