

AUTO EXPRESS 80



PRINCIPAL DIMENSIONS

Length overall	79.8 metres
Length (waterline)	75.6 metres
Beam (moulded)	17.0 metres
Hull depth (moulded)	5.9 metres
Hull draft (maximum)	2.85 metres

PAYLOAD AND CAPACITIES

Passengers	967
Crew	20
Vehicles	146 cars
Trucks	228 lane metres
Maximum deadweight	480 tonnes

PROPULSION

Main engines	4 x MTU 16V 4000 M53R 4 x 1,520 kW @ 1,600 rpm
Gearbox	4 x ZF 7640
Propulsion	4 x Fixed pitch propellers

PERFORMANCE (with Ride Control fitted)

Speed (100% MCR)	20.0 knots
------------------	------------

CLASSIFICATION

Germanischer Lloyd
✕100 A5. RSA (200) HSC-Passenger B, Ro-Ro Type DG "High Speed Passenger / Ro-Ro Type" Machinery ✕ MC
Certified to carry Dangerous Goods Categories 2.1 (except Hydrogen) and Cat 3

FLAG

French



YARD NO.: 201

DESTINATION: FRENCH POLYNESIA

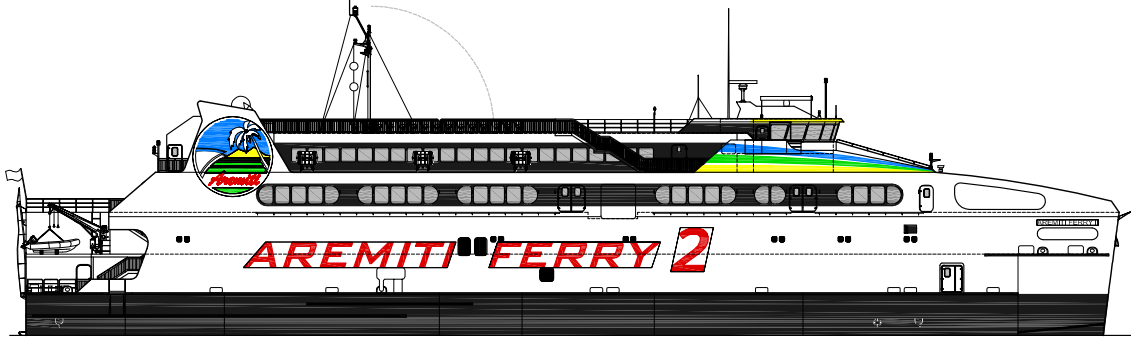
DELIVERY: 2013

CLIENT: AREMITI FERRY

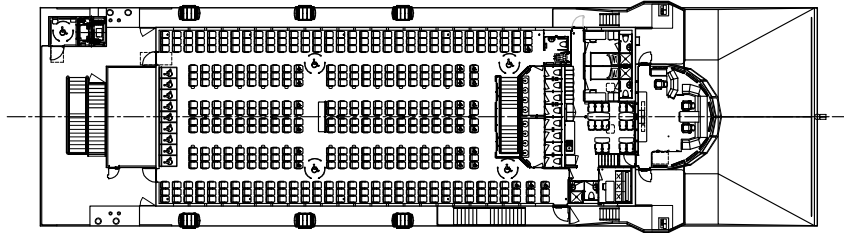
AUTO EXPRESS 80

Vessel type: 80m Medium Speed Vehicle-Passenger Catamaran

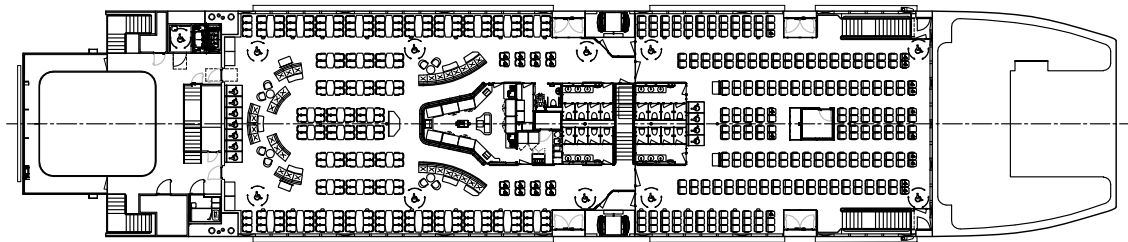
PROFILE



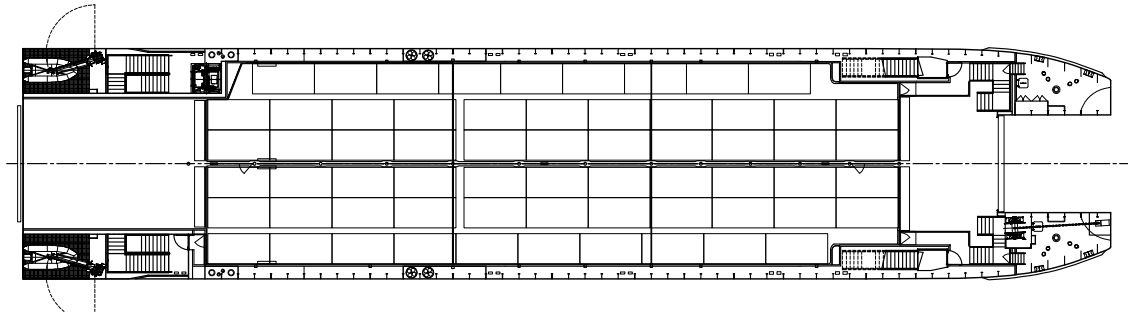
BRIDGE DECK



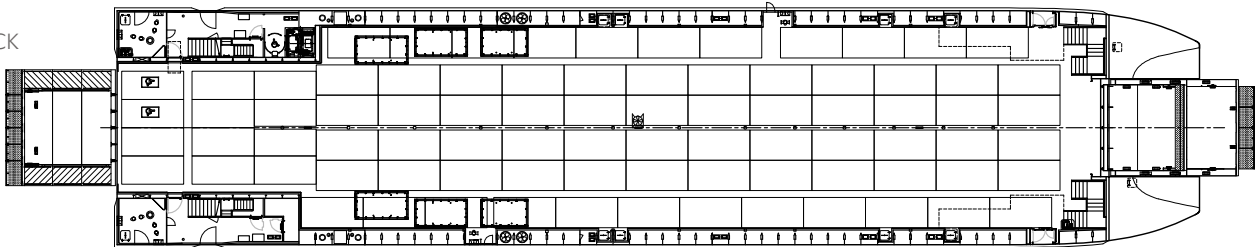
UPPER DECK



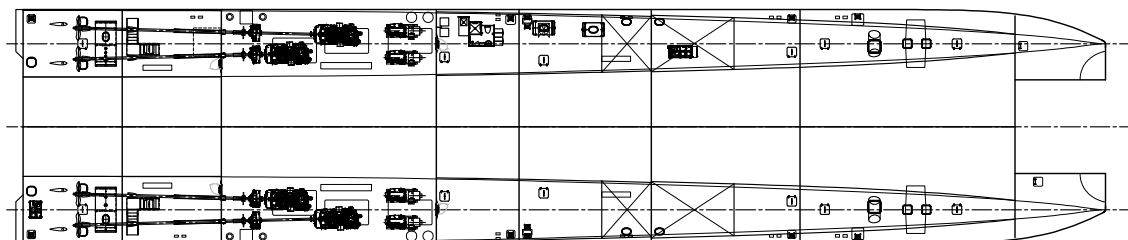
MEZZANINE DECK



MAIN DECK



HULLS



YARD NO: 201

DESTINATION: FRENCH POLYNESIA

DELIVERY: 2013

CLIENT: AREMITI FERRY

SHIPS • SYSTEMS • SUPPORT

WWW.AUSTAL.COM

