

AUSTAL TSV 101



YARD NO: 130
AUSTAL - THEATRE SUPPORT VESSEL "WESTPAC EXPRESS"

YARD NO: 130

DESTINATION: WESTERN PACIFIC

DELIVERED: JULY 2001

CLIENT: UNITED STATES MARINE CORPS

GENERAL VESSEL DESCRIPTION

Vessel type	Theatre Support Vessel
Material	Aluminium alloy
Hull form	Round bilge, bulbous bow, catamaran
Deadweight (maximum)	790 tonnes

PRINCIPAL DIMENSIONS

Length overall	101.0 metres
Length (waterline)	86.2 metres
Beam (moulded)	26.7 metres
Hull Depth (moulded)	9.4 metres
Draft	4.3 metres

CARGO DECK

Usable area	2,490m ²	
Clear height	Centre	5.1 and 4.6 metres
	Side	2.7 metres
	Mezzanine	2.0 metres
Deck strength	Centre	(single wheel) 12 tonnes/axle (dual wheel) 15 tonnes/axle
	Side	3.0 tonnes/axle
	Mezzanine	1.2 tonnes/axle

PERSONNEL DECK

Crew accommodation	26
Personnel seating	900
Options	Configuration fully flexible

TANKAGE

Fuel	368,000 litres
Water	20,000 litres

PROPULSION

Main engines	4 x Caterpillar 3618 4 x 7,200 kW @ 1,050 rpm
Gearboxes	4 x Reintjes Vlj 6831
Waterjets	4 x Rolls Royce KaMeWa 125 SII



PERFORMANCE (with Ride Control fitted)

Speed (90% MCR)	36.0 knots
Fuel consumption	5.3 tonnes/hour

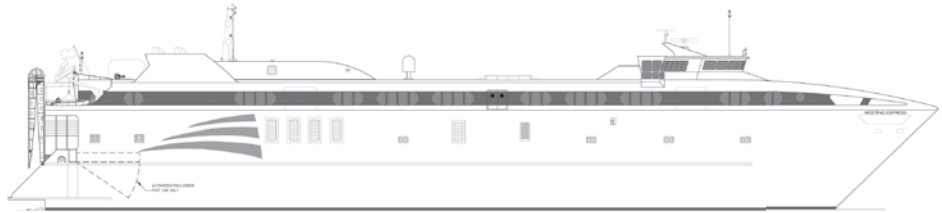
CLASSIFICATION

Germanischer Lloyd
 ✕ 100 A5 HSC-B OC3
 USA Flag

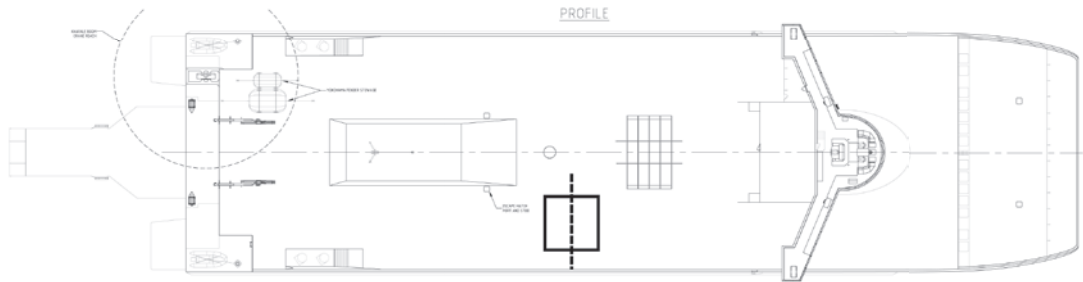
AUSTAL TSV 101

Vessel type: Theatre Support Vessel

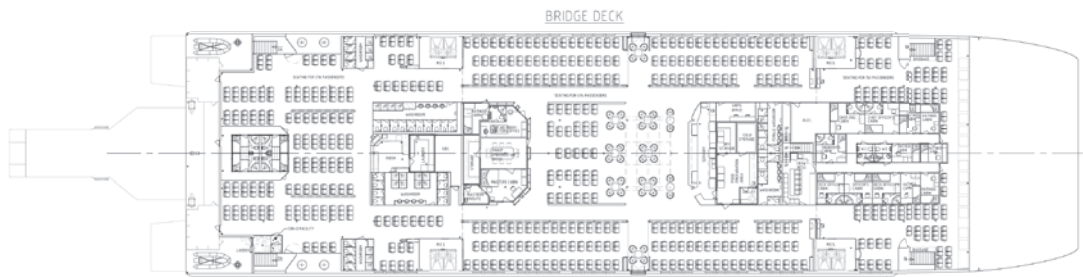
PROFILE



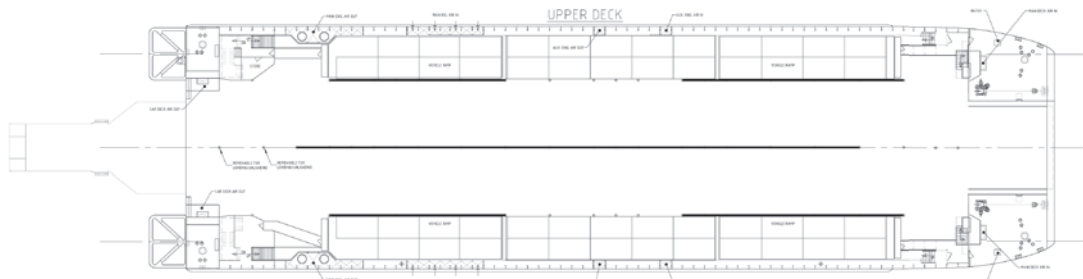
BRIDGE DECK



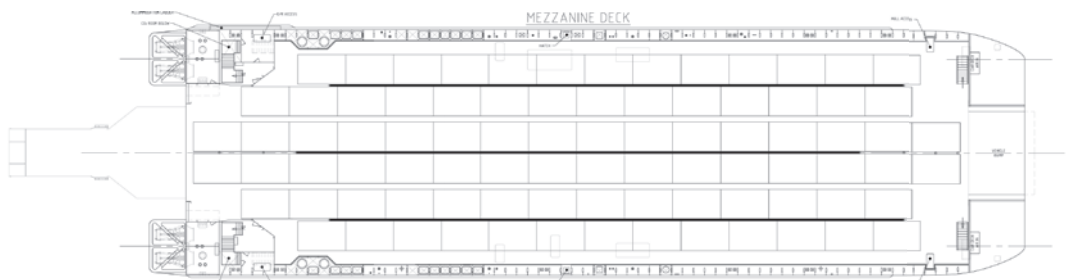
UPPER DECK



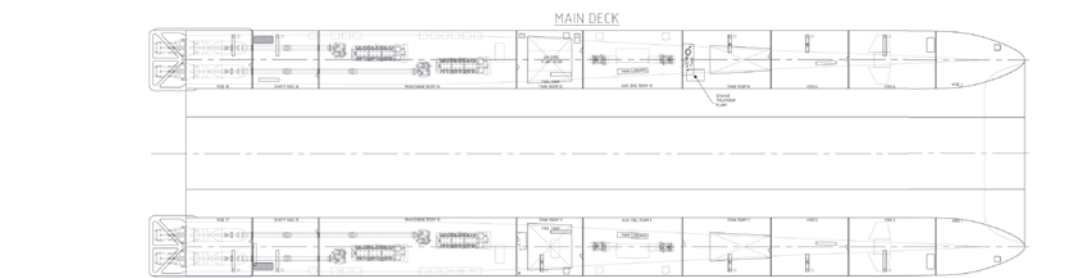
MEZZANINE DECK



MAIN DECK



HULLS



YARD NO: 130
AUSTAL - THEATRE SUPPORT VESSEL "WESTPAC EXPRESS"

DESTINATION: WESTERN PACIFIC

DELIVERED: JULY 2001

CLIENT: UNITED STATES MARINE CORPS

100 Clarence Beach Road
Henderson
Western Australia 6166

Tel +61 8 9410 1111
Fax +61 8 9410 2564
sales@austal.com
www.austal.com

